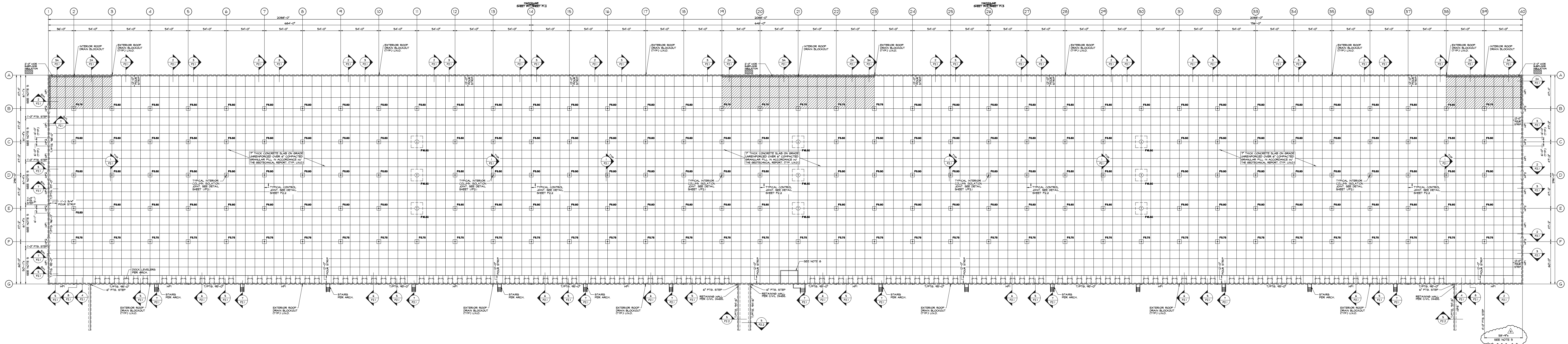


SUBMITTALS		
NO.	DATE	DESCRIPTION
1	2.1.2022	PROGRESS
2	2.28.2022	95% PROGRESS
3	6.8.2022	PERMIT
4	7.8.2022	FTG. STEPS
5	9.8.2022	AS NOTED
6	9.30.2022	100% BUILDING SET

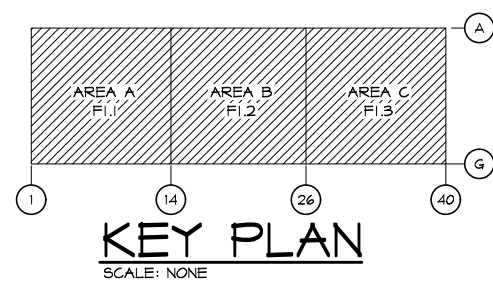


WALL FOOTING SCHEDULE		
MARK	FOOTING SIZE	FOOTING REINFORCEMENT
WF1	2'-0" x 8'-2"	5 - #4 CONT. TOP & BOT. W/ #3 TIES @ 60" O.C.
WF2	3'-6" x 8'-2"	5 - #4 CONT. TOP & BOT. W/ #3 TIES @ 24" O.C.
WF3	3'-6" x 8'-2"	SEE DETAIL S/P2.2

COLUMN FOOTING SCHEDULE		
MARK	FOOTING SIZE	FOOTING REINFORCEMENT
FS.50	3'-6" x 8'-2"	6 - #5 E.H. BOT.
FS.75	5'-0" x 8'-2"	6 - #5 E.H. BOT.
FS.6.50	16'-6" x 16'-6"	18 - #8 E.H. TOP & BOT.

OVERALL FOUNDATION PLAN

- SCALE: NONE
- NOTES:
- FINISH FLOOR REFERENCE ELEVATION = 100'-0".
 - TOP OF INTERIOR COLUMN FOOTING ELEVATION = 99'-0" U.N.O.
 - TOP OF EXTERIOR FOOTING ELEVATION = 99'-0" U.N.O.
 - COORDINATE ALL DOOR OPENINGS AND LOCATIONS WITH ARCHITECTURAL DRAWINGS.
 - VERIFY LOCATION OF ALL FOOTING STEPS WITH PANEL DRAWINGS PRIOR TO CASTING FOOTINGS.
 - INDICATES 10 MIL VAPOR BARRIER UNDER SLAB ON GRADE. REINFORCE WITH WAP. #4-#12 @ 24" O.C.
 - VERIFY LOCATION OF BLOCK CUTS FOR DOWNPOUTS WITH PLUMBING DRAWINGS PRIOR TO CASTING FOOTINGS.
 - 8" CHU REINF. W/ #4 @ 24" O.C. FULL HEIGHT. SEE DETAIL SHEET F2.2.
 - PROVIDE JOINT FILLER IN SPEED BAY SLAB JOINTS.



OVERALL PLAN FOR
REFERENCE ONLY.
USE SHEETS F1.1 TO F1.3
FOR WORKING DWGS